



BBCE



WHAT IS BBCE?



**BALTIC
BIOMATERIAL
CENTRE OF
EXCELLENCE**

WHAT DO THEY DO?

BIOENGINEERING



- **BIOMATERIAL RESEARCH**
- **TECHNOLOGY TRANSFER**
- **SCIENTIFIC TRAINING**



H2020 projects



PROJECTS

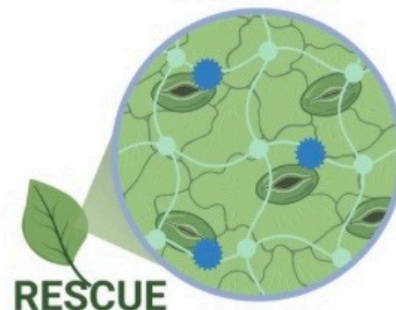
THEY'RE PARTICIPATING

**ES PROGRAM
HORIZON 2020**



**FOR INFECTION CONTROL AND
FAST BONE TISSUE REGENERATION
(BIOCORE)**

ERDF projects



**BIOENGINEERED SOLUTIONS TO
ADDRESS ANTIBIOTIC
RESISTANCE IN BONE TISSUE
APPLICATIONS (RESCUE)**

DAILY LIFE

**PROJECTS &
STUDIES**

**DATA
ANALYSIS**

**LAB &
EXPERIMENTS**

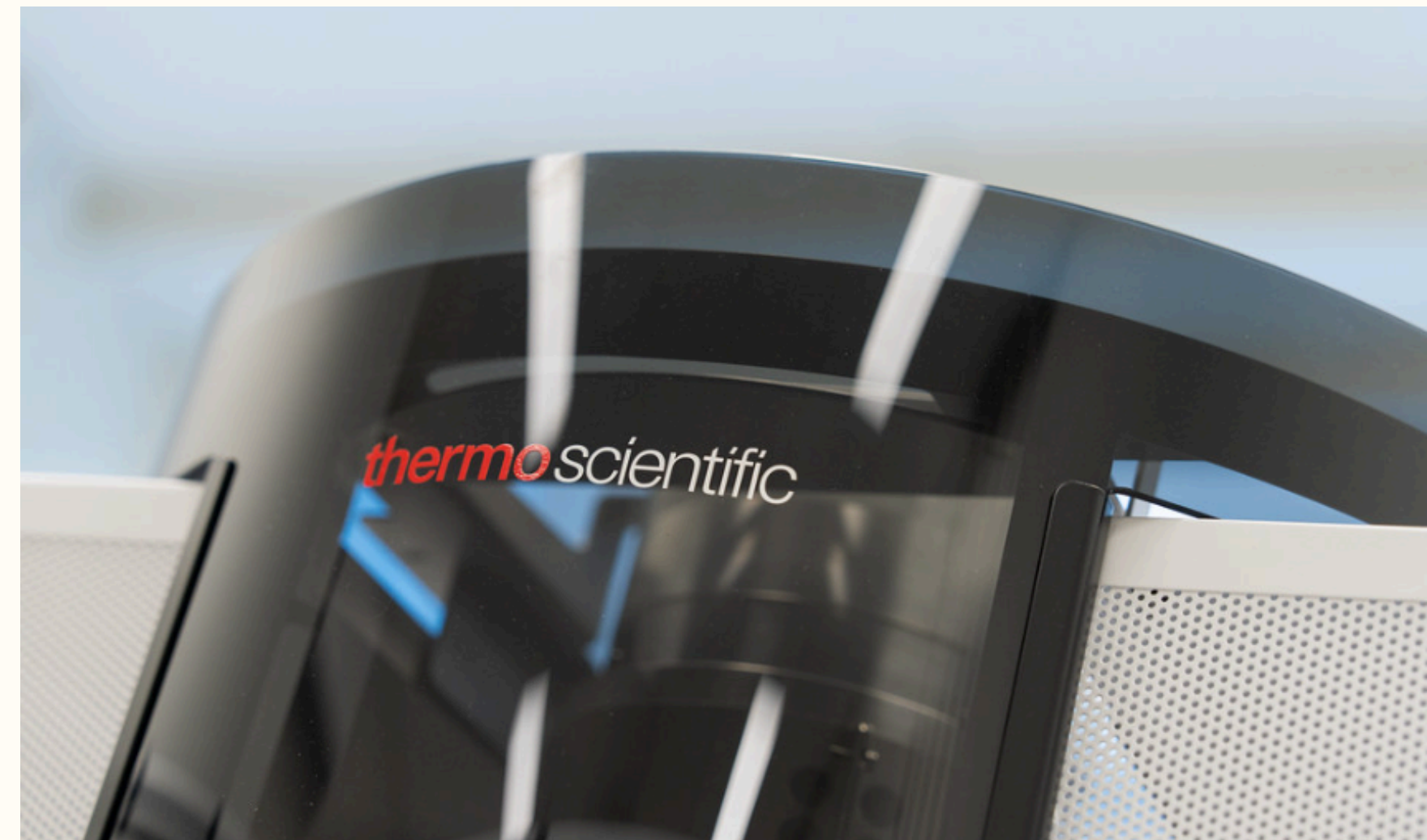


METHODS & MACHINES

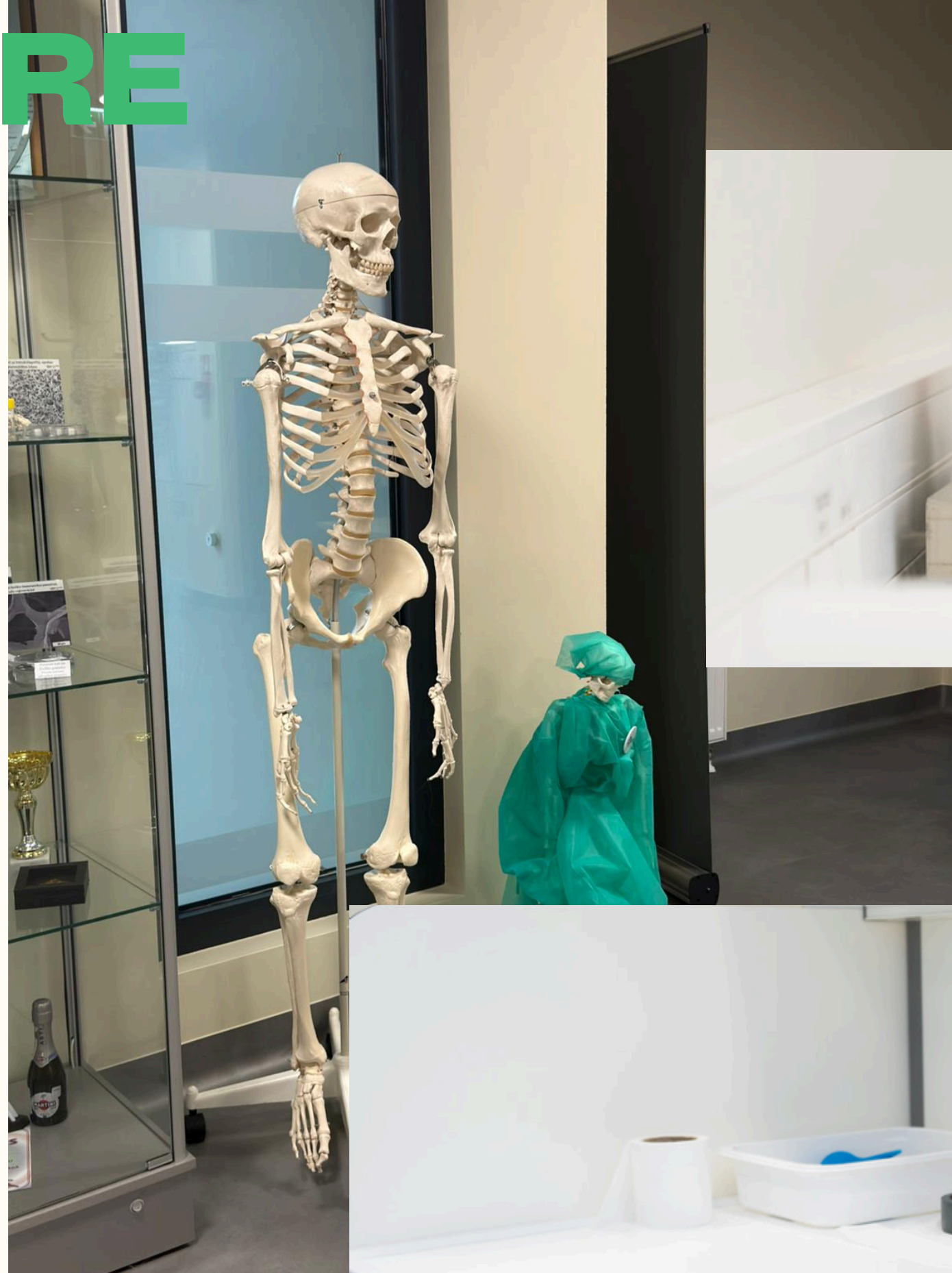
**CRYSTAL
STRUCTURE**

METABOLYTES

**STRENGTH
TESTING**



ATMOSPHERE



TEHNICAL JARGON

METABOLITES

NANOCRYSTALS

BIO-RESORBABLE

**COLD
SINTERING**

**CALCIUM
PHOSPHATES**

**THANK
YOU!**